

Being Church

November 2024



A time to Remember

A season of mists and mellow fruitfulness was how John Keats described Autumn. Writing in 1819 'To Autumn' was published a year before his death. In it he reflects on the fruitfulness of Autumn but with a wistful reflection on the passing of time. In our churches we too reflect on the passage of time. In September and October we celebrate the bounty of the Harvest but



when November arrives we turn to the passing of the years, looking back over the lives of people we have known, and of those we never knew who gave their lives in order that we might live in safety and security. November is always associated with Remembrance Services. This year with all the troubles in the world I imagine Remembrance Sunday will be of special significance. Sometimes we give November a bad press as a month.

That is unless it's your birthday. We look for things to brighten our days. Maybe that is why the looking forward to Christmas is beginning even earlier; something to banish the ever shortening length of daylight and cast a bright light on a gloomy day. Is looking forward, I wonder, so much more exciting than looking back?

When we look forward we have a blank canvass before us. We can colour it in whatever way we like. We don't know how the future will unfold. Looking back is very different, we know how things worked out, but we can still be selective. We might want to look at fun things that happened and relationships that are flourishing, forgetting the times we made mistakes, did things wrong, or messed up a relationship. I think of November as a time to reflect and a time to be courageous.

Revd Ann Fox

Phone: 01937 582854

Email: ann.fox@methodist.org.uk

Revd Abi Alex (from Sept)

Phone: 01937 364489

Email: abi.alex@methodist.org.uk

Eileen Clarkson (Local Lay Pastor) **Phone:** 07494 050940

Email: eileencoombe@hotmail.com

www.tadcastercircuit.org.uk

**Boston Spa - Clifford - Collingham - East Keswick - Tadcaster - Wetherby
Lower Wharfe (at Appleton Roebuck, Church Fenton & Ulleskelf)**



A time to look at the past and recognise what has gone right and what we can learn from our mistakes, and the honesty required to do it well, takes courage. In the Old Testament God frequently told his followers to build memorials to mark particular stages in their journey and to remind them of where God had led them from. They were also to be a marker for people to share with their children. In the book of Revelation two of the

churches were urged to look back 'Remember therefore from where you have fallen; repent, and do the works you did at first. If not, I will come to you and remove your lampstand from its place, unless you repent.'

Looking back should never stop us moving on, instead, reflecting on the past can be very helpful in deciding on our future action. At this time of year we have a great opportunity to do that, but only if we tune out all that encouragement to celebrate Christmas right now, just hold back and maybe take some time out with Jesus in prayer and preparation for celebrating Christ the King Sunday and Advent. Christmas will come in due course and you will be able to enjoy it even more because you took time out to remember and prepare.

Heather

Katherine Whaley

It is with great sadness, that we share the news that Katherine Whaley has passed away, she was senior steward at Clifford Methodist Church and known across the circuit. Funeral arrangements will be announced in due course.

PRAYER

Local Pastor Eileen hosts a weekly **Circuit Prayer Meeting** on **Zoom** **Every Tuesday, 9.30am – 10am (join from 9.15am)** all are invited to join us. *Please contact Eileen for the Zoom log on details.*

WORSHIP

For Sunday service see the Circuit Plan, copies are available in our buildings or [via this link](#).

If you have something you wish to highlight in the **December'24** issue of **Being Church** (or the diary), please send it to **Juliana** by **Friday, 22 November**. Thank you.
tadcastercircuit@gmail.com

Tadcaster Circuit Diary

- 24 Oct (Thu)** Circuit Celebration Praise - 6pm faith tea, 7pm service at Clifford Methodist Church - All Welcome.
- 28 Oct (Mon)** Love in a Box - Christmas Shoebox Coffee Morning at Collingham From 10am to 12noon
- 19 Nov (Tue)** Are we a welcoming church? - 7pm by Zoom, contact Revd Ann Fox

Save the date - 2025

- 11, 18 & 25 Feb (Mon)** Revive us again - 7pm by Zoom, contact Revd Ann Fox

19 Mar (Wed) Songs of Praise - 7:30pm at Wetherby MC (Andrew Marshall)

21 Jun (Sat) Midsummers day guided walk at Ripon (Hilary & Andrew Marshall)

District Diary

Save the date - 2026

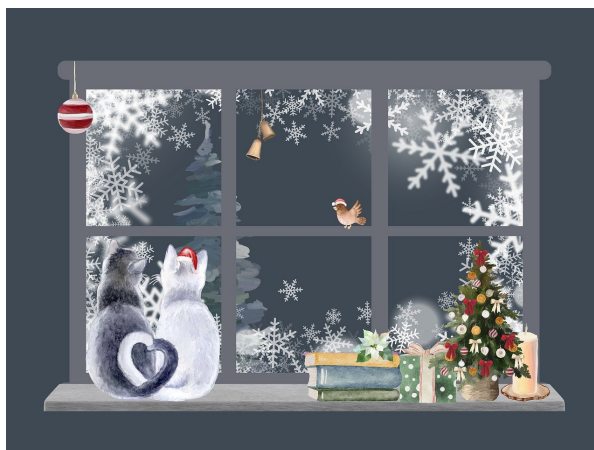
13-15 Feb Flourish at University of York "Woven Threads"

MWiB Events

5 Dec (Thu) Advent event at Lidgett, York

Advent Window displays

Clifford Methodist Church is decorating their windows in the season of Advent, as in previous years. Advent Window decorations will be ready for display by 1 December until well into the New Year. They can be viewed at anytime, but obviously best after dark for full effect. All welcome!





Bible Study

Paul's Missionary Journeys

with Revd Ann Fox
and John Kimmer

at Tadcaster Methodist Church

Wednesday 6 November 10am

Wednesday 11 December 10am

more dates to follow

All are welcome

Café Prayer

A time of prayer in church
for 10 minutes
alongside the usual
coffee morning at 11am

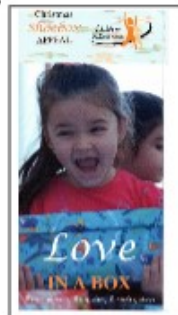
**Tuesdays: 19 November &
17 December (Christmas carols)**

Tadcaster Methodist Church

The Methodist Church

Collingham Methodist Church LOVE IN A BOX

Christmas Shoebox
Coffee Morning
Monday 28th October
10am – 12noon



Don't think you can fill a shoebox yourself?
Don't miss out!

Here's an opportunity to bring any
contributions to be included in the Shoeboxes

Suggested items include:

Soap, Flannel and Toothbrush and Paste,
Hat, Scarf, Gloves, Soft toys, Sweets,
Crayons, Felt pens, Colouring books, Pens,
Pencils, Erasers, Sharpeners, Paper,
Toys, Cars, Trucks, Tennis balls, Playing cards, Jigsaws,
Jewellery, Hair accessories, Balloons,
£2 towards transportation.

Empty Shoeboxes & wrapping paper needed!

Why not come along and help fill some boxes?
Chat, have a cuppa and be a part of this worthwhile cause
Further details from Local Pastor Eileen 07494 050940

Boston Spa Methodist Church
presents its tenth annual



Community Christmas Tree Festival 2024

Friday 13th December, 10am–5pm

12 noon Our renowned pre-concert lunches

1pm Lunchtime Concert (tickets £6 on the door) *
"A Christmas Box of Delights"

Saturday 14th December, 10am–5pm

10.30am Collingham Band

From 11am Donkey rides (weather permitting)

3pm Christmas performance by Voices of Rock

Sunday 15th December, 12 noon–6pm

10.30am A Christmas Celebration (a short service for all ages)

6pm Festival Carol Service

- A stunning display of beautifully decorated trees
- Visit Santa from 11am-12 noon and 3.30pm-5pm both Friday and Saturday
- "Get in the Picture" – Nativity photo opportunity
- Organ recitals
- Tombola and Cake Stall
- Refreshments available throughout

FREE ENTRY

(* except the Friday Lunchtime Concert)



Donations welcome to:
The Millie Wright
Children's Charity

Please see our website for further details:
www.bostonspamethodistchurch.org.uk

Fairtrade

This year marks the 30th anniversary of the Fairtrade mark. More than ever we are encouraging people to spread the word about Fairtrade and shop ethically this Christmas.

Our first Real Advent Calendar was launched in 2013. Eleven years on it is still the only one which is Fairtrade, which includes a 24 page copy of the Christmas story and which supports the charitable work in the UK and abroad. Each year we approach leading artists to illustrate the Christmas story books. Eleven years on, with your support, we have sold more than 1 million calendars with more than million people experiencing the Christmas story through a Real Advent Calendar.

Supermarkets are not stocking our goods so our online shop is the only place where you can buy our full range. Click the links below to view products or go straight to our [shop here](#).

A chocolate orange with meaning... We have created the world's first Fairtrade Meaningful Chocolate Orange boxed in the style of a Christingle. It's great as a gift or for services. It has Christingle symbols on the box along with an explanation of their meaning. The box also doubles as charity collection box with a slot for coins so you can encourage donations to a charity. Everything is plastic free and can be recycled.

Chocolate Christingle



The Methodist Church

New venue: **UNIVERSITY OF YORK**

Flourish

13/02/26 - 15/02/26

WOVEN THREADS

**REDISCOVERING OUR PLACE
TOGETHER IN GOD'S BIG TAPESTRY**

Come to York in 2026 for this all-age festival of inspiration, celebration, worship and renewal. A Methodist District gathering and Christian Conference. A diverse programme across a 3-day event to help us grow as Flourishing Missional Communities.



Rediscover how you can flourish in your faith: Speakers | Workshops | Worship | Activities
www.yorkshirenethodist.org/flourish26

Receive email updates



SCAN ME

Regular Events

Date	Time	Event	Location
Monday (weekly)	10.45am	Table Tennis	Wetherby
Monday (weekly)	2.30pm	Ping-Pong	Boston Spa
Monday (weekly)	5.00pm	Senior Table Tennis	Boston Spa
Monday (weekly)	7.30pm	Badminton	Wetherby
Monday (2nd)	10.30am-12noon	Bacon Brunch	Collingham
Monday (2nd & 4th)	2.00-4.00pm	Friends & Fellowship	East Keswick
Monday (4th)	10.30am-12noon	Coffee & Chat	Collingham
Tuesday (weekly)	9.30-10.00am	Circuit Prayer Gathering	Zoom (Eileen)
Tuesday (weekly)	9.40-10.00am	Prayer Gathering	Clifford
Tuesday (weekly)	10.00-11.30am	Coffee Shop	Tadcaster
Tuesday (weekly)	10.00-11.30am	Tuesday Coffee	Clifford
Tuesday (weekly)	10.00am	Flower Club	Boston Spa
Tuesday (1st)	2.00-4.00pm	Flowers & Friends	Collingham
Tuesday (1st & 3rd)	9.15-10.00am	Prayer Group	Tadcaster
Tuesday (2nd)	2.00-4.00pm	Friends & Fellowship	Ulleskelf
Tues (3rd) not Aug/Sep	7.00pm	Tuesday Meeting	Church Fenton
Tuesday (4th)	1.00pm	Community Soup Lunch	Ulleskelf
Wednesday (weekly)	10.00am-12noon	Coffee Shop	Wetherby
Wednesday (weekly)	10.30am-12noon	Chapel Coffee Pot	Appleton Roebuck
Wednesday (weekly)	10.00-10.30am	Prayer Group	Wetherby
Wednesday (weekly)	11.15am-12.15pm	Coffee at t' Crown	Crown Hotel Boston Spa
Wednesday (weekly)	7.00pm	Table Tennis	Wetherby
Wednesday (irregular)	contact Wetherby	House-Group	contact Wetherby
Wednesday (1st)	2.00-4.00pm	Knit & Natter	Tadcaster
Wednesday (1st)	2.00-4.00pm	Women's Group	Wetherby
Wednesday (2nd)	10.00am	Communion in the Box	Box Tree Ct, B Spa
Wednesday (2nd & 4th)	contact Wetherby	Gentlemen Bootbashers	contact Wetherby
Wednesday (3rd)	2.00-4.00pm	Whist Afternoon	Collingham
Wednesday (last)	1.00-3.00pm	Coffee, Click 'n' Connect	Appleton Roebuck
Thursday (1st)	12noon	Community Soup Lunch	Church Fenton
Thursday (2nd)	12noon	Community Soup Lunch	Tadcaster
Thursday (last)	12noon	Souper Thursday	East Keswick
Friday (1st)	10.00-11.30am	Teddy Praise	Collingham
Saturday (weekly)	10.00-12noon	Coffee Shop	Wetherby
Saturday (2nd)	2.00-3.30pm	Charity Coffee Afternoon	Church Fenton



If you have something you wish to highlight in the **December'24** issue of **Being Church** (or the diary), please send it to **Juliana** by **Friday, 22 November**. Thank you. tadcastercircuit@gmail.com